

COMMERCIAL TWO LAMP

Premium Strip Fixture

FEATURES

Flip-up socket bars.

Continuous raceway and row mounting capability.

Surface, stem, or chain mountable.

Uses T8 or T12 lamps.

Steel housing and ends with white enamel finish.

Available in aluminum, for salty or corrosive environments.

APPLICATION

Retail Stores

Manufacturing Areas

Parking Garages

Stairwells

Warehouse Areas

Coves

Utility Area

Valances

Large Storage Rooms

Display



SL248HOELDV	T-12	48"	120/277
SL296HOELDV	T-12	96"	120/277

APPLICATION FEATURES

Mid Grade, fluorescent strip fixture. For use in indoor applications where low cost, but industrial grade ruggedness is required. Socket bar flips up for easy installation. Available in lengths from 15 to 96 inches. Converts to raceway for continuous row mounting.

CONSTRUCTION

Die and brake formed, code gauge pre-painted white cold rolled steel. Screw fastened end plates can be repositioned to serve as joiners for continuous row mounting, thus forming a continuous, uninterrupted wireway (on non-welded units only). Single wireway cover on non-tandem units. Knockouts are provided for flexible conduit attachment.

MOUNTING

Knock-outs are provided for stem mounting. Mounting holes are provided. Optional V (Speedy) hangers accommodate chain (not provided).

FINISH

Pre-painted high reflectance white.

ELECTRICAL

All electrical components are CSA or UL approved. Lamp holders provided ensure positive lamp retention. Lamp holders with rotary locks are available.

Standard ballasts are electro-magnetic, energy saving where required. See Product Selection for optional ballasts. The standard voltage is 120V, 60 Hz, or as specified. Other Voltage and frequency ratings are also available. Sufficient knockouts are provided on the back and ends for connections and through wiring.

APPROVALS

Approved to CSA and UL standards. (UL, or equivalent, marked only when specified.)

OPTIONS

- 20 gauge riveted construction.
- 20 gauge welded construction.
- Electronic ballasts and dimming ballasts, see Product Selection.
- Polycarbonate rotary lock lampholders.
- Individual & custom packaging (select units only).

OPTIONAL ADDERS

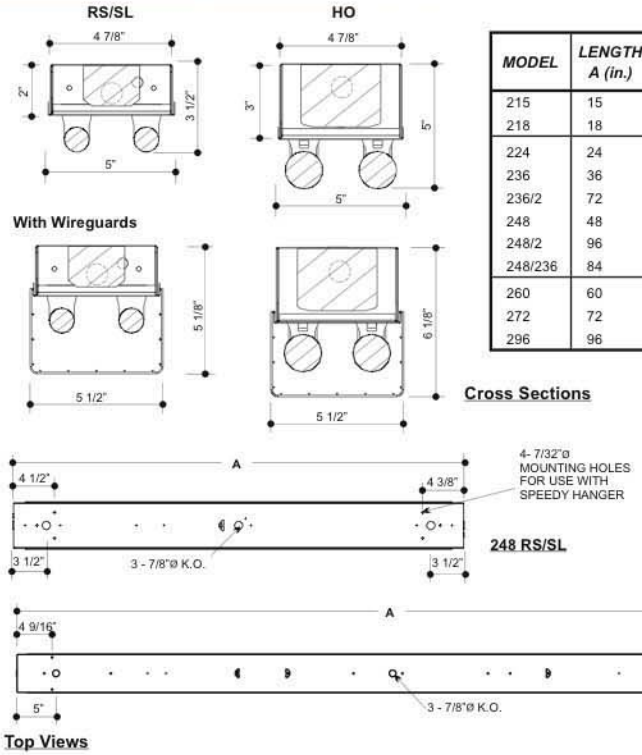
- Fuse holder.
- Convenience outlet.
- Pull chain switch
- Turn switch
- Toggle switch.
- Heavy duty wire guards. powder coated white finish, comes with mounting hardware.
- Light duty wire guards, galvanized finish, comes with mounting hardware.
- Light duty wire guards. powder coated white finish, comes with mounting hardware.
- Speedy Hangers.

COMMERCIAL TWO LAMP

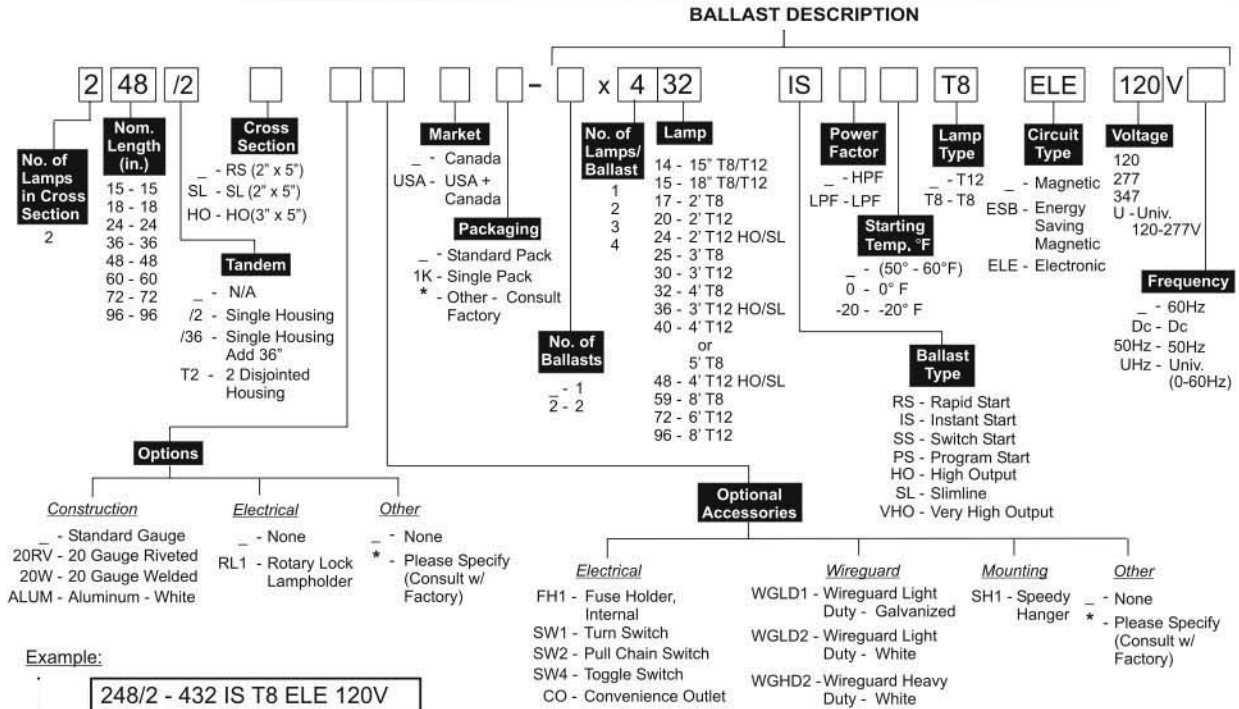
COMMERCIAL TWO LAMP

Premium Strip Fixture

Series Dimensions



Product Key



Certain configurations may not be available