

INDUSTRIAL TWO LAMP

Premium Industrial Luminaire

FEATURES

Flip-up socket bars.

Available with full, half and asymmetrical reflectors.

Single piece reflectors for 6' and 8' lamps.

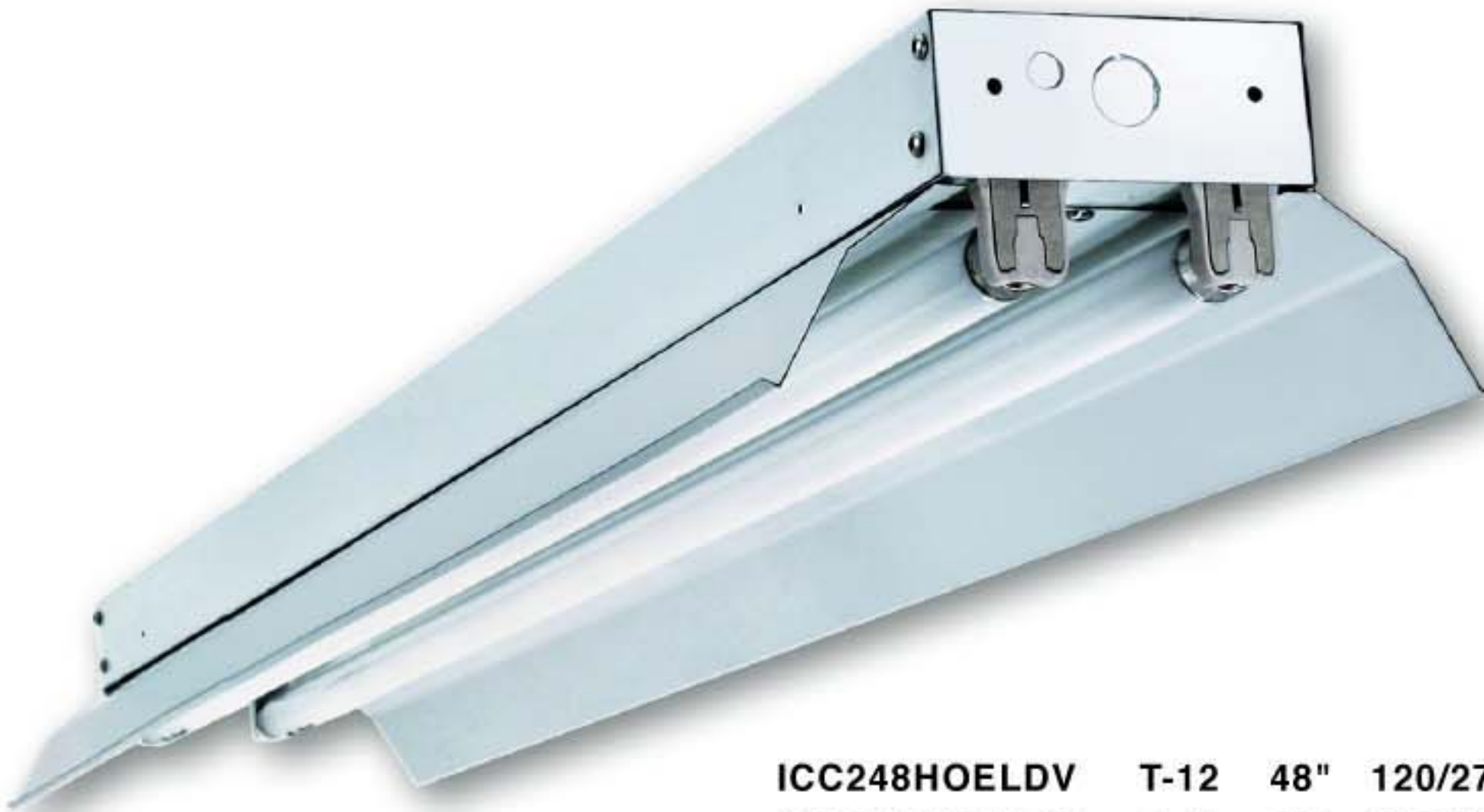
Continuous raceway and row mounting capability.

Surface, stem, or chain mountable.

Uses T8 or T12 lamps.

Steel housing and ends with white enamel finish.

Available in aluminum, for salty or corrosive environments.



ICC248HOELDV	T-12	48"	120/277
ICC296HOELDV	T-12	96"	120/277

APPLICATION

Warehouse Aisles

Warehouse Areas

Manufacturing Areas

Garage and Workshops

Utility Area

Large Storage Rooms

Coves

APPLICATION FEATURES

Mid Grade, fluorescent industrial fixture. For use in indoor applications where low cost, but industrial grade ruggedness is required. Available in lengths from 18 to 96 inches. Socket bar flips up for easy installation. Converts to raceway for continuous row mounting.

CONSTRUCTION

Die and brake formed, code gauge pre-painted white cold rolled steel. Screw fastened end plates can be repositioned to serve as joiners for continuous row mounting, thus forming a continuous, uninterrupted wireway (on non-welded units only). Single piece reflector on non-tandem units. Knockouts are provided for flexible conduit attachment.

MOUNTING

Knock-outs are provided for stem mounting. Mounting holes are provided. Optional V (Speedy) hangers accommodate chain (not provided).

FINISH

Pre-painted high reflectance white.

OPTICS

Standard reflectors are solid and are coated with a durable, high reflectance white finish. Optional reflectors are available with 1/2 reflector or asymmetric cutoffs. Optional reflectors are available with a slotted upright component. Optional reflector configurations are available in VF, high reflectance specular aluminum.

ELECTRICAL

All electrical components are CSA or UL approved. Lamp holders provided ensure positive lamp retention. Lamp holders with rotary locks are available. Standard ballasts are electromagnetic, energy saving where required. See Product Selection for optional ballasts. The standard voltage is 120V, 60 Hz, or as specified. Other Voltage and frequency ratings are also available. Sufficient knockouts are provided on the back and ends for connections and through wiring.

APPROVALS

Approved to CSA and UL standards. (UL, or equivalent, marked only when specified.)

OPTIONS

- Slotted full reflector, painted white.
- 14" reflector, painted white.
- Asymmetric reflector, painted white.
- 1/2 reflector, painted white.
- VF1 - 95% reflectance, specular anodized aluminum reflector.
- 20 gauge riveted construction.
- 20 gauge welded construction.
- Electronic ballasts and dimming ballasts, see Product Selection.
- Polycarbonate rotary lock lampholders.
- Individual & custom packaging (select units only).

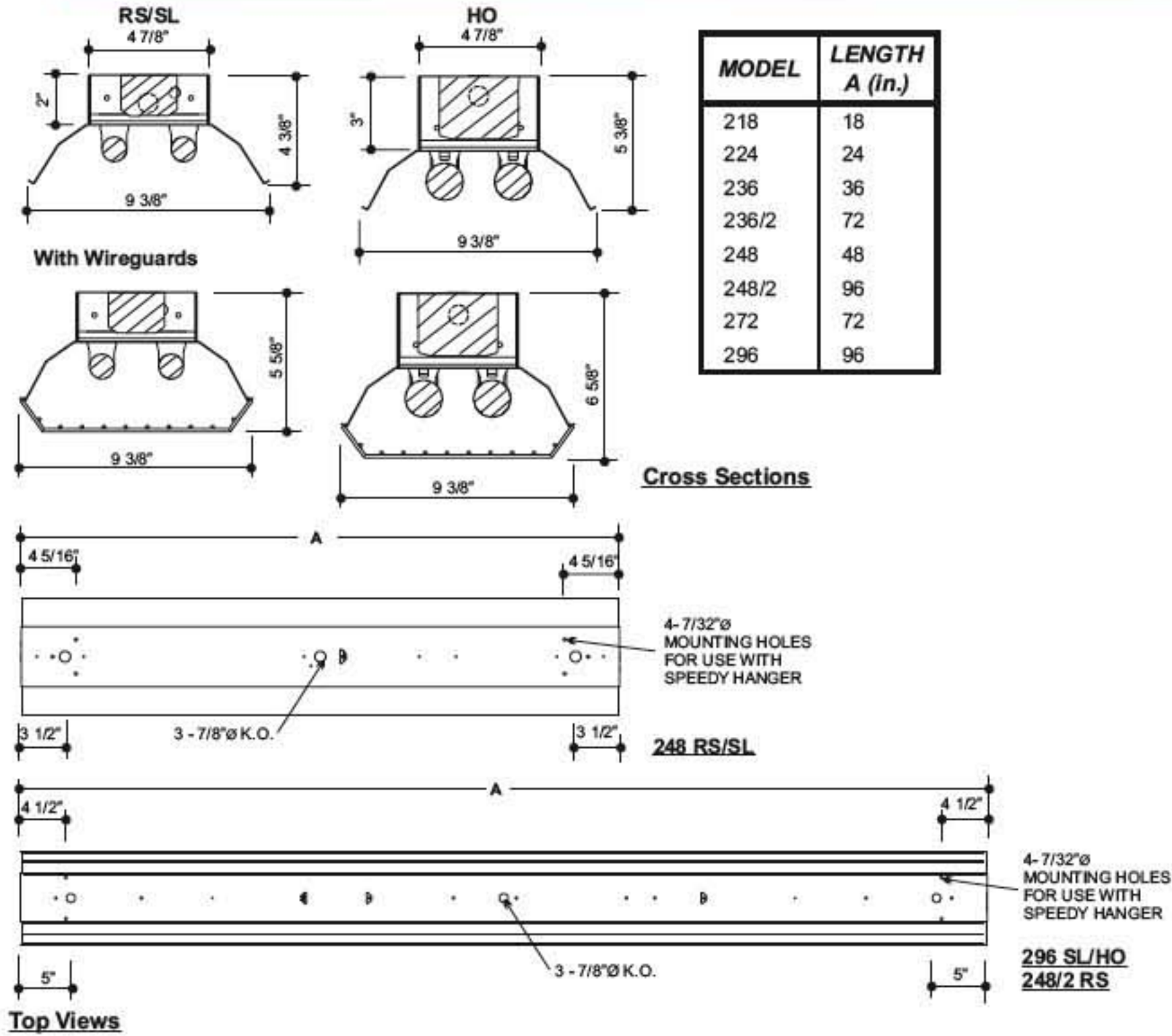
OPTIONAL ADDERS

- Heavy duty wire guards, powder coated white finish, comes with mounting hardware.
- Fuse holder.
- Pull chain switch
- Aligner clips, for row mounting.
- Speedy Hangers.

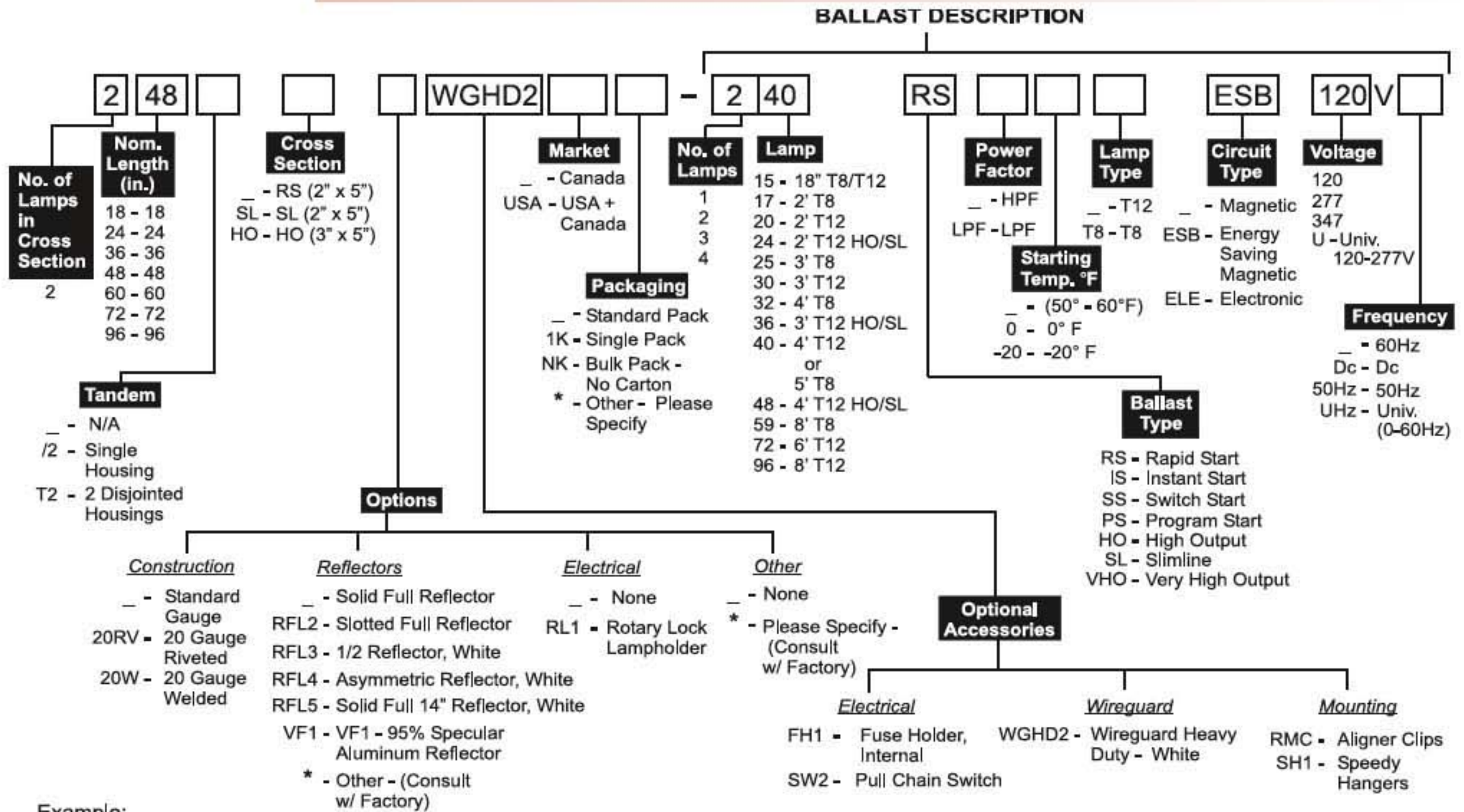
INDUSTRIAL TWO LAMP

Premium Industrial Luminaire

Series Dimensions



Product Key



Example:

248 WGHD2 - 240 RS ESB 120V

Certain configurations may not be available